

SCOTTSDALE AIRPARK

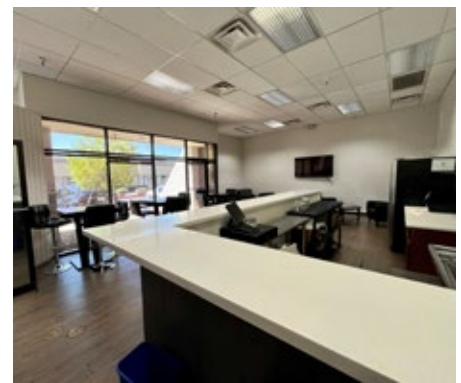
COLD COUNTER CAFÉ / JUICE / SMOOTHIE SPACE

FOR SUBLEASE ±700 SF

14305 N 79th Street | Suite G | Scottsdale, Arizona 85260



*SIGN & PROPS PICTURED FOR ILLUSTRATIVE PURPOSES ONLY



I-1 Zoning - Light Industrial, City of Scottsdale

FEATURES

- Sublease opportunity within Altered Athletics gym for a small juice / smoothie bar and cold counter
- Private entrance separate from gym for customer entry as well as interior opening to gym for cross access
- Large wrap-around countertop with room to pull up bar stools to eat & drink
- Multiple seating/lounge areas with television
- Refrigerator, microwave and two sinks in place
- Situated in Industrial Park for repeat customer base potential
- Rate includes electric!
- Shared restrooms with gym space



FOR MORE INFORMATION CONTACT:



RANDY SHELL
Designated Broker
O 480.443.3992
C 480.694.4100

randy@shellcommercial.com



AMANDA WRIGHT
Senior Associate
O 480.443.3992
C 480.236.0037

amanda@shellcommercial.com

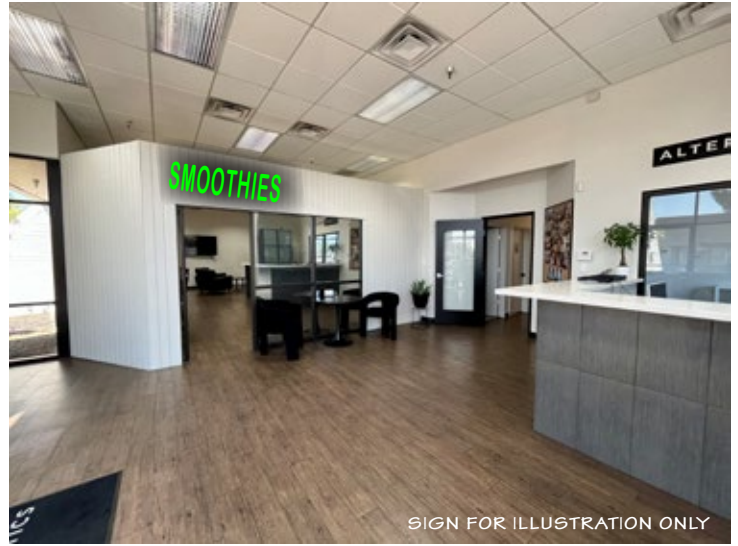


480.443.3992

16410 N 91st St | Ste 112
Scottsdale, Arizona 85260
shellcommercial.com

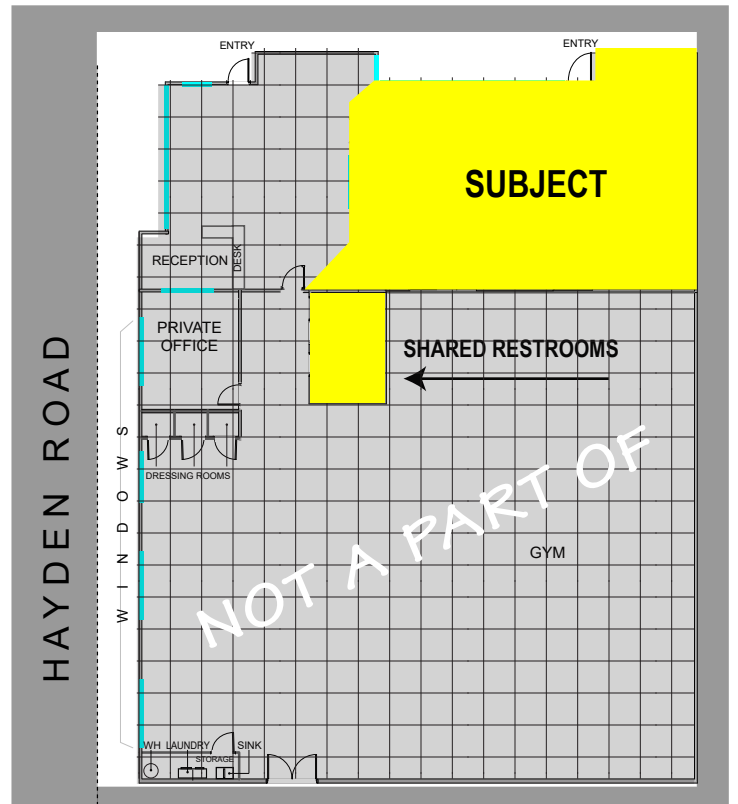
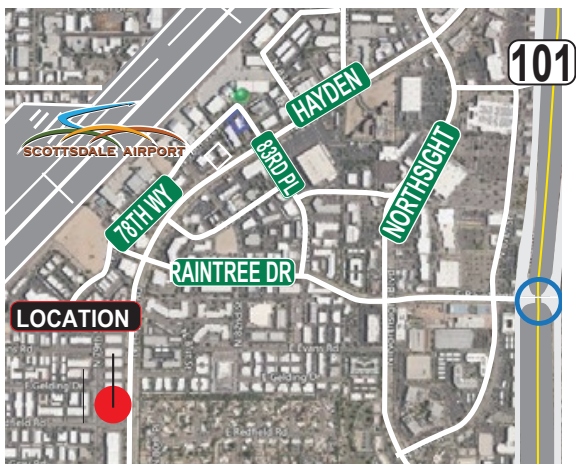
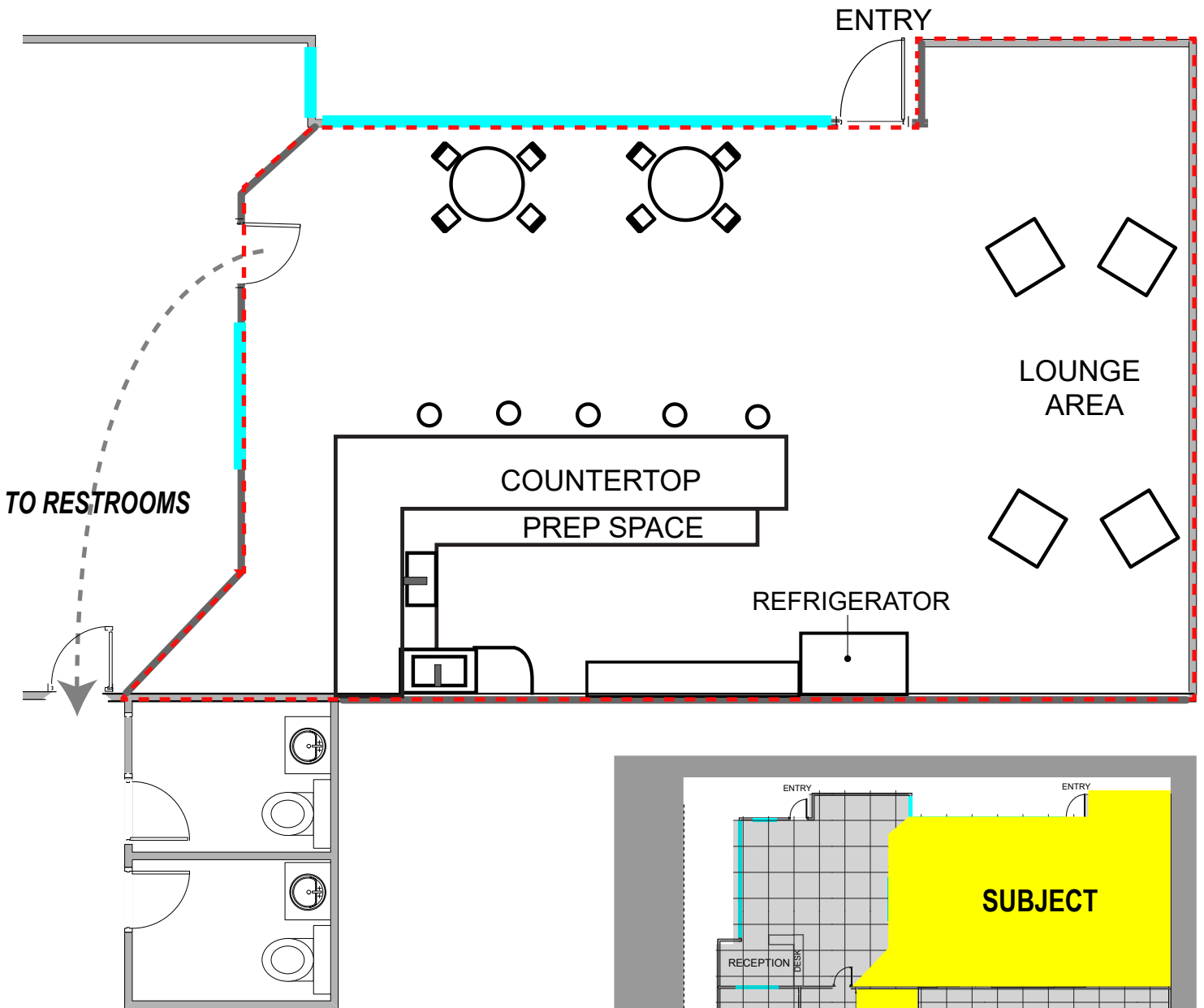
INTERIOR PHOTOS

14305 N 79th Street | Suite G | Scottsdale, Arizona 85260



FLOOR PLAN ±700 sf

14305 N 79th Street | Suite G | Scottsdale, Arizona 85260



NOT TO SCALE: All information furnished regarding property for sale, rental or financing is from sources deemed reliable, but no warranty or representation is made to the accuracy thereof and same is submitted to errors, omissions, change of price, rental or other conditions, prior to sale, lease or financing or withdrawal without notice. No liability of any kind is to be imposed on the broker herein. This information has been secured from sources deemed reliable, however, we make no warranties as to its accuracy.